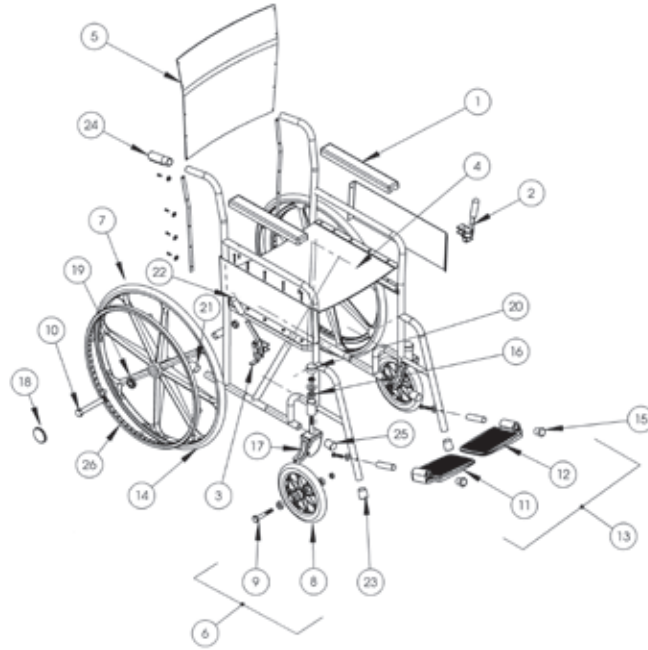


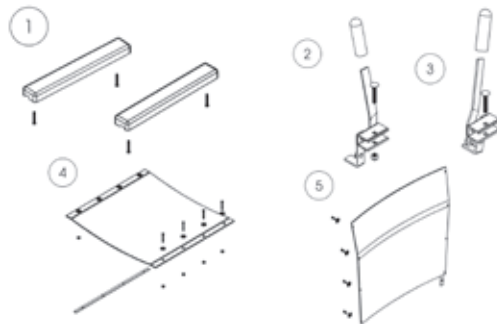
# Care Chair – 20”

Main Assembly  
Handbrake & Seat Assembly  
Wheel & Caster Assembly

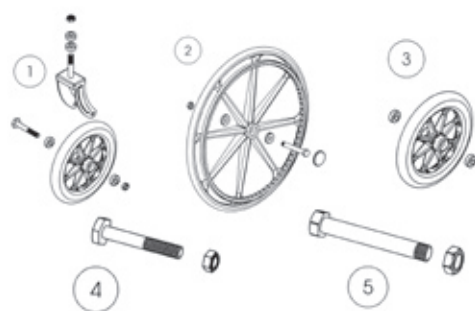


ITEM NO.	PART NUMBER	DESCRIPTION
1	210-1138	ARM REST ASSEMBLY, BOTH
2	250-1139	BRAKE ASSEMBLY, LEFT HAND
3	250-1140	BRAKE ASSEMBLY, RIGHT HAND
4	250-1659	SEAT ASSEMBLY, GRAY
5	250-1658	SEAT BACK ASSEMBLY, GRAY
6	250-1700	CASTER ASSEMBLY, 20 cm (8 in) SWIVEL
7	250-1572	WHEEL ASSEMBLY, REAR
8	250-1701	WHEEL ASSEMBLY, 20 cm (8 in)
9	250-1702	AXLE BOLT & NUT, 20 cm (8 in)
10	250-1703	AXLE BOLT & NUT, REAR
11	250-1410	FOOT REST, RIGHT HAND
12	250-1409	FOOT REST, LEFT HAND
13	250-1566	FOOT REST, SET
14	200-1794	WHEEL AND TIRE
15	250-1565	BUMPER, RUBBER
16	250-1710	BEARING, STEM, CASTER
17	250-1711	FORK, 20 cm (8 in) CASTER
18	250-1713	HUB CAP
19	250-1714	BEARING, REAR WHEEL
20	250-1715	DUST CAP, FRONT STEM
21	250-1716	END CAP, REAR TUBE
22	250-1717	HANDLE GRIP, BRAKE
23	250-1718	END CAP, FRONT DOWN TUBE
24	250-1719	HAND GRIP, HANDLEBARS
25	250-1720	END CAP, FRONT
26	250-1722	HANDRIM & SCREWS

ITEM NO.	PART NUMBER	DESCRIPTION
1	210-1138	ARM REST ASSEMBLY, BOTH
2	250-1139	BRAKE ASSEMBLY, LEFT HAND
3	250-1140	BRAKE ASSEMBLY, RIGHT HAND
4	250-1659	SEAT ASSEMBLY, GRAY
5	250-1658	SEAT BACK ASSEMBLY, GRAY



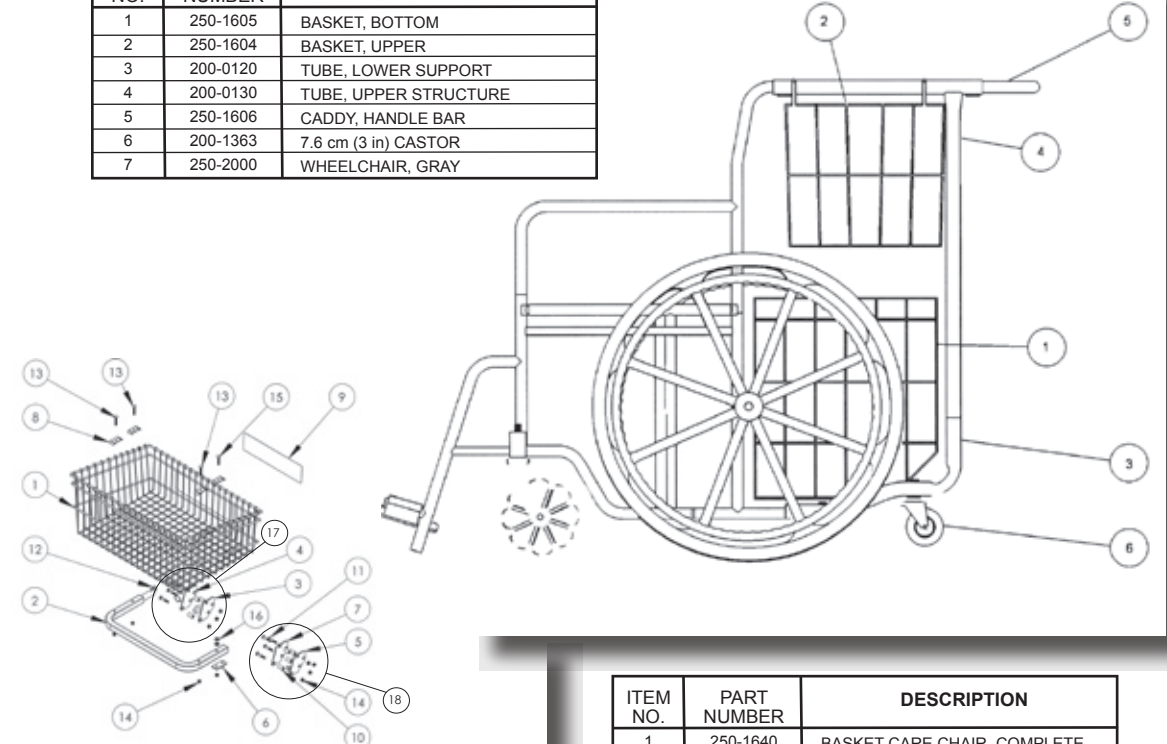
ITEM NO.	PART NUMBER	DESCRIPTION
1	250-1700	CASTER ASSEMBLY, 20 cm (8 in) SWIVEL
2	250-1572	WHEEL ASSEMBLY, REAR
3	250-1701	WHEEL ASSEMBLY, 20 cm (8 in)
4	250-1702	AXLE BOLT 20 cm (8 in) (WHEEL) & NUT
5	250-1703	AXLE BOLT (REAR WHEEL) & NUT



# Care Chair Baskets

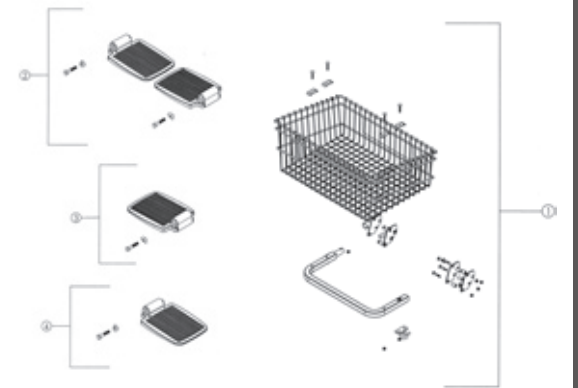
Basket Assembly  
Foot Rest Assembly

ITEM NO.	PART NUMBER	DESCRIPTION
1	250-1605	BASKET, BOTTOM
2	250-1604	BASKET, UPPER
3	200-0120	TUBE, LOWER SUPPORT
4	200-0130	TUBE, UPPER STRUCTURE
5	250-1606	CADDY, HANDLE BAR
6	200-1363	7.6 cm (3 in) CASTOR
7	250-2000	WHEELCHAIR, GRAY



ITEM NO.	PART NUMBER	DESCRIPTION
1	250-1600	BASKET, FRONT, CC1
2	250-1601	FRAME, MOUNT TUBE
3	200-1635	BRACKET, INNER PIVOT, R.H.
4	200-1610	BRACKET, OUTER PIVOT, R.H.
5	200-1632	REST, OUTER BASKET, L.H.
6	200-1636	CATCH PIN
7	200-1631	PLATE, CLAMPING
8	200-1620	BASKET MOUNTING CLIP
9	200-1622	DECAL, OPERATING INSTRUCTIONS
10	200-1612	SPACER, NYLON, .50 X .257
11	000-1614	BOLT, 1/4-20 X 1 1/2
12	200-1615	SAFETY RING W/CHAIN
13	000-1618	BOLT, CARRIAGE, 1/4-20 X 1 1/2
14	000-1613	NUT, 1/4-20 NYLOC
15	000-1617	BOLT, 1/4-20 X 1 3/4
16	000-1609	WASHER, FLAT, 1/4
17	250-1642	BRACKET SET, PIVOT, R.H.
18	250-1643	BRACKET SET, REST, L.H.

ITEM NO.	PART NUMBER	DESCRIPTION
1	250-1640	BASKET CARE CHAIR, COMPLETE
2	250-1639	FOOT REST SET/ WHEEL CHAIR
3	250-1635	FOOT REST, RIGHT HAND
4	250-1634	FOOT REST, LEFT HAND



**-IMPORTANT INFORMATION-**

**FREIGHT DAMAGE**

The carrier who delivers merchandise to your door is responsible for loss and damage. Acceptance of the shipment by you is acknowledgement that all articles delivered were in good condition and properly packed. Therefore, all claims for loss of damage must be filed immediately with the freight carrier. Then notify us. We will mark your records accordingly. After settling claim, damaged merchandise will be picked up by the freight carrier and returned. Should you need assistance with the claim, call out customer service at 1.800.548.3373.

**RETURN GOODS**

When the error is not ours, merchandise returned for credit or exchange is subject to a 15% restocking charge. Goods must be returned in new condition with freight prepaid. Prior return authorization is required.

**LIMITED WARRANTY**

All wheelchair parts are warranted for one year against defects in material or workmanship. Labor is covered for 90 days from Date of Shipment.

Defective parts will be repaired or replaced by the company or its appointed agent. The warranty does not cover damage caused by misuse or negligence, nor does it cover defects or damages by use, or unauthorized parts or service by an unauthorized person.

This warranty gives you specific legal rights, and you may also have other rights which vary from state to state.

All correspondence relating to this warranty must indicate: model number and serial number and be addressed to:

**115 E. Linden • Rogers, Arkansas 72756 USA**

**-PRODUCT INFORMATION-**

**CARE CHAIR MODELS**

CARE CHAIR SERIES: The traditional style chair without a basket.

CARE CHAIR I SERIES: The traditional style with a single heavy-duty front basket. Standard size 20" wide.

CARE CHAIR II SERIES: Designed with two large rear baskets (no front basket) where the caregiver can shop with easy access to the baskets.

CARE CHAIR III SERIES: Designed with all three baskets (front and rear). The unique Care Chair III is the right chair for shopping in your retail store. It pays for itself because it provides so much more purchasing capacity with over 5 cubic feet of basket space.

**FRONT & REAR BASKETS**

**FRONT BASKET:** Sturdy rugged design rated up to 40 pound capacity. The R.H. support bracket provides a pivot for the basket to swing up out of the way, thus allowing free access to and from chair. The L.H. support bracket supports and stabilizes the baskets in a level, "in use" position.

**REAR BASKET CADDY:** Fills large capacity requirements by providing two baskets, one above the other. Maximum weight each rear basket 50 pounds.

**-SAFETY INFORMATION-**

**CHAIR MAINTENANCE & SAFETY INSPECTION**

- **WARNING:** Be sure both Warning Decals are on the basket and operating instructions are on outside of left hand clothing guard.
- **22" "UNI-MOLD" MAG COMPOSITE WHEELS:** Our exclusive wheel design provides high strength, low maintenance, and is lightweight. One piece molded construction guarantees superior rollability and performance. Outlasts conventional tires by up to three (3) times. Periodically examine tires for wear. Worn tires will make your wheelchair difficult to propel. Both wheels should be replaced at the same time to prevent chair from pulling to one side. Adjust loose or wobbly wheels. First remove hubcap, remove all dirt and lint from outside of bearings, and tighten axle locknut. Tilt the wheelchair to one side and spin the wheel, if it stops abruptly it is too tight. Readjust the axle bolt, replace hub cap.
- **8" CASTERS:** Wheel is secured to the caster fork by an axle bolt and nut. To adjust, rotate bolt and lock with nut. Wheel should be snug but free spinning. If the caster flutters or shimmies, remove the caster cap. Adjust the locknut located under the caster cap. Take-up all play. Back-off about 1/2 turn. Replace cap.
- **X-BRACE:** The pivot bolt is extra long to permit flexing of the wheelchair frame so all 4 wheels contact the ground when crossing uneven surfaces. The pivot bolt's nut must be fully engaged but not tightened down, allowing the bolt to move freely. If the pivot bolt becomes worn, replace.
- **NO LOCKING BAR ON CCII:** (Basket keeps from collapsing.) CCII & CCIII have front Anti-Stance locking bar.
- **ANTI-TIPPER REAR CASTER WHEELS:** Replace if worn, broken or missing.
- **CLEANING AND POLISHING:** The upholstery, vinyl components, wheels and tires can be cleaned with warm water and a mild detergent. Wipe dry immediately with a soft clean cloth.
- **WHEEL BRAKES:** As tires wear, adjust brakes to prevent 22" wheels from turning when brakes are engaged. To adjust, loosen the locknut located under the clamp bracket. Slide brake on rail to proper position. Retighten the locknut. IF BRAKES BECOME WORN, REPLACE IMMEDIATELY.
- **ARMREST:** Most arm rests are color-keyed hard molded. Besides being comfortable, they are durable. To maintain appearance and comfort, replace arm rests if they become cracked, worn or discolored.
- **CLOTHING GUARDS:** Wheelchairs use screw-attached stainless steel clothing guards.
- **SEAT AND BACK UPHOLSTERY:** Only premium grade vinyl or naugahyde is used. Inner liners are made of textile to prevent sag and wear. REPLACE IMMEDIATELY IF UPHOLSTERY IS RIPPED OR SAGS. To ensure comfort and uniformity of appearance, both seat and back upholstery should be replaced together.
- **FOOTRESTS:** All footrests are height adjustable. A simple cross-bolt provides quick and easy adjustments.
- **WEIGHT LIMITATION:** 20" Chair width, 350 pound occupant. Front basket 40 pounds, rear basket 50 pounds each.

MC1-CC-WUHO2-OM-121009-EN PRINTED IN THE USA  
SPECIFICATIONS SUBJECT TO CHANGE WITHOUT NOTICE

All warranty claims should be called in to 1.800.548.3373 or 479.636.5776. Ask for service. Please provide serial number for warranty verification when requesting service.

**CARE CHAIR**™  
By MART CART 20"

**mart cart**®

A quality product line of  
Mart Cart®- Assembled Products™ Corporation

**1.800.548.3373** (US & Canada only)  
115 E. Linden • Rogers, Arkansas 72756 USA  
Phone: 479.636.5776 • Fax: 479.636.3245  
International call: **1.479.636.5776**

**IMPORTANT DOCUMENT – DO NOT DISCARD**

<b>Serial Number:</b>	<b>Date Shipped:</b>
-----------------------	----------------------

NOTE: Specifications found in this manual subject to change without notice.

FOR COMMERCIAL USE ONLY. NOT FOR PERSONAL USE.

**CARE CHAIR**™

By MART CART 20"

**CONGRATULATIONS**

You have just purchased the finest American made shopping wheelchair available today. This wheelchair, with shopping basket options, is specifically designed with comfort for your valued customers.

To assure optimum wheelchair usage, performance and long life, please read this manual thoroughly. If you need assistance, please call 1.800.548.3373.

**TO ORDER PARTS CALL: 479.636.5776 OR 1.800.548.3373 (US & Canada only)**

International call: 1.479.636.5776