

# Handy Cart Basket Assembly

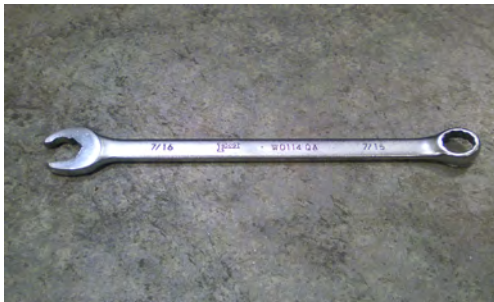
**Step 1** Your Handy Cart should look like this when you remove it from the box. The basket has been shipped upside down to reduce shipping costs. Please check at this time for any signs of damage.



**Step 2** Turn the basket to its upright position and look for the RED indicator marks. There are two marks by each mounting hole and there are four mounting holes.



**Step 3** Remove the four mounting clips with a 7/16" wrench and set them to the side for a moment. They will be returned to the same holes after you set the basket into its correct position.



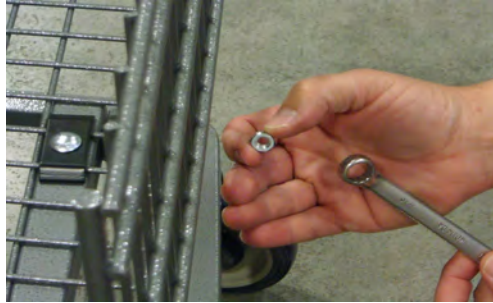
**Step 4** Set the basket in place. Look for the RED indicator marks and align them on each side of the four holes.



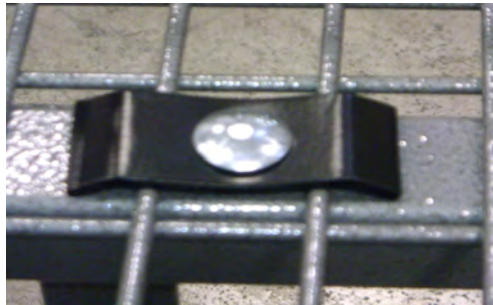
**Step 5** Replace the four mounting clips and start the nuts onto the ends of the bolts. Be sure to align the square end of the bolt's shaft into the square hole in the mounting clip.



**Step 6** Tighten the nuts with the 7/16" wrench. Hold the mounting clips in position while tightening.



**Step 7** The mounting clip will compress inward under the head of the bolt. This is what you want to see. Tighten the bolt until the mounting clip begins to touch the square tubing.



**Step 8** When finished the basket should be in its proper position with the back of the basket inward from the square tubing. This tubing should be out farther than the end of the basket.



**Step 6** Your Handy Cart is now ready for use. Read all information given in the Owner's Manual and observe all warnings and recommendations.

